

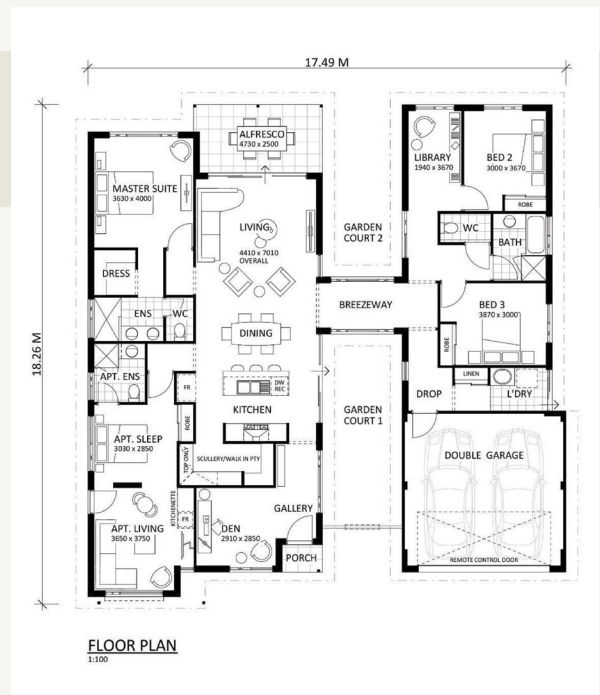


The Daintree Retreat Classic

FROM \$972,000



- Vitrium Stone Benchtops to Chefs Kitchen
- Hobless Showers
- Downlights throughout
- Architectural retreat front elevation
- Studio guest retreat



New Homes Consultant
Andre Cater 0432 351 082

* Terms and conditions apply. See builder website and specific package for full terms and conditions. Price correct at time of publication and is subject to change. Images and landscaping are for illustrative purposes. House and land sold separately. Yolk Property Group is not the builder of the home. The home is advertised by agreement between Yolk Property Group and the builder, The Rural Building Co BC11422. Advertised price does not include transfer duty, settlement costs and other settlement of the land fees. Provisional sum for site works included in price.

ARBOUR
 MARGARET RIVER





MASTERPLANNED COMMUNITY
WITH RESIDENTS CLUBHOUSE

ARBOUR

MARGARET RIVER

Includes
Residents
Clubhouse
with 25m Heated Pool,
Fully-equipped Gym,
Tennis Courts
& More

Just five minutes from Margaret River town centre, Arbour is a masterplanned land estate offering residential green title lots and an Over 55's community. Enriched with resort-style facilities, it promises an active community lifestyle in a setting that celebrates the beauty of the South West.



Crafted by
YOLK
PROPERTY
GROUP

Take a look at
your multi-million
dollar backyard



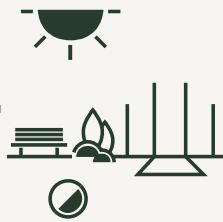
\$15m



Residents clubhouse with resort-like facilities

Includes cafe, fully-equipped gym, 25m heated pool, kids splash zone, tennis/multi courts, multipurpose hall, mother's room and so much more.

\$2m+



Shared playing fields

District oval shared playing field for AFL, soccer, or leisure activities like kite flying.

3x



Green space

Almost 3 times more green space than standard land developments.

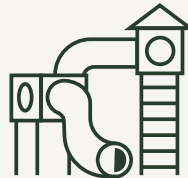
2-4km



4km Walking & 2km MTB trails

Designed by Magic Dirt, walk or ride custom-built trails weaving through established and newly planted marri and karri trees.

\$1.5m



Adventure playground

Landmark feature adventure playground to keep the kids outdoors and active.

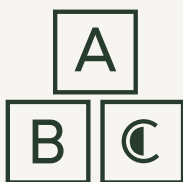
K-6



Future public primary school

Walking distance to the estate's future primary school offering education from Kindy through to Year 6.

+60



Childcare

Convenient childcare integrated into the community hub with provision for up to 60 children.

1st



Integrated Over 55's Community

An Australian 1st provides an opportunity for grandparents to be closely involved in grandkids' lives.

7,500+



Boranup Tree Seedlings

Planting out of 7,500+ trees in Stage 1 alone. Tree-lined parks and avenues featuring karri seeds sourced from the Boranup area before it was declared a National Park.

**\$1.5m Landmark
Adventure Playground
at Arbour Margaret River**



SALES AGENT
Katherine &
Ryan Severn
0438 904 494

Realtime Realty

Crafted by  YOLK
PROPERTY
GROUP

Register your interest today, visit arbourmargaretriver.com.au

ARBOUR
MARGARET RIVER